

КАТАЛОГ ПРОДУКЦИИ

PRODUCTION CATALOGUE

ANDEKO

www.andeko.lv

ANDEKO

“ANDEKO”

2005

: Deluxe, Standard, Eko.

Deluxe

. Standard

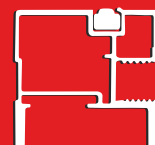
. Eko

Koncept,

Koncept

2008

ANDEKO company successfully works on Latvian market from 2005. We are the wholesaler of aluminium profiles and accessories for sliding doors as well as the producer of aluminium doors. All of our profiles have EU patents, the designs were created taking into account the latest furniture industry trends and ergonomic points to satisfy the needs of our clients completely. Our aluminium systems can be used as room dividers as well as sliding doors for wardrobes and can be divided in three price categories: Deluxe, Standard, Eko. Deluxe profiles have refined design, which can satisfy the most pretentious clients. Choosing these profiles you will make your home look unique and stylish. Standard is focused on the basic part of consumers, it is remarkable for its reasonable price and good quality. Eko is offered as economic option. All of the systems, except Koncept, are represented in three colours: silver, gold, champagne. Koncept profile has just silver colour. Lately we have actively expanded our markets geography, thus from 2008 we have begun selling to other European countries. We appreciate our clients trust and will be glad to start any new collaboration!

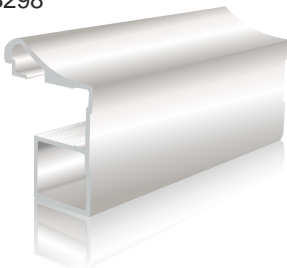
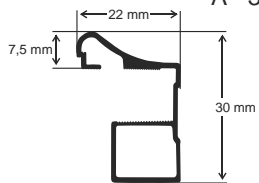


ANDEKO



EKO system

A - 3298



PATENT
001124812-0005

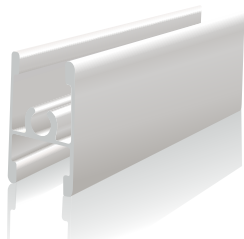
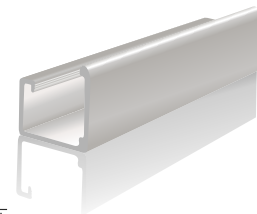
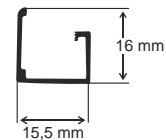


CHAMPAGNE

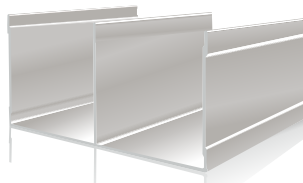
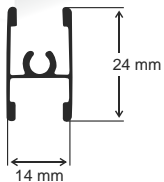
GOLD

SILVER

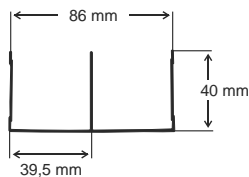
A - 3297



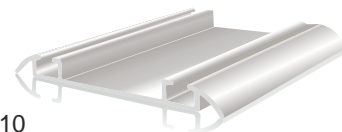
A - 203



AB - 012



AB - 010



PVC - 208 4 mm



SL - 209

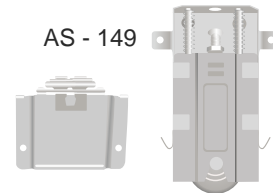


A - 204



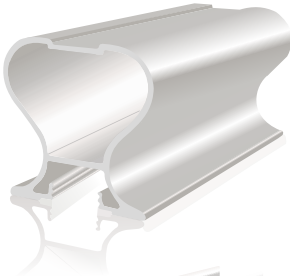
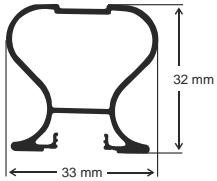
A - 205/30

AS - 149



Twise standard system

A - 2937

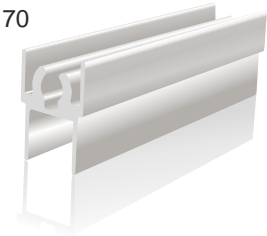
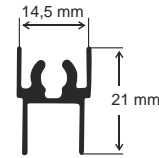


CHAMPAGNE

GOLD

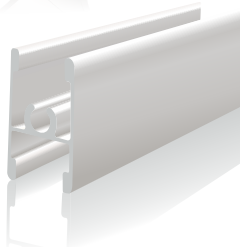
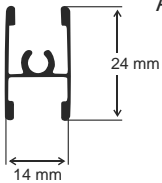
SILVER

A - 170

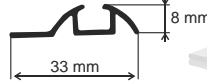


PATENT
001617564-0001

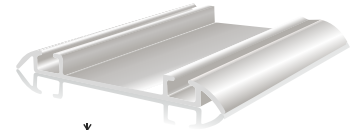
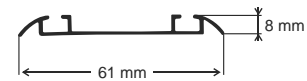
A - 203



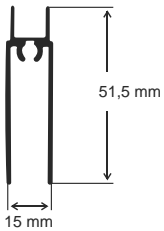
A - 301



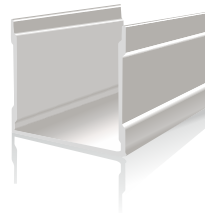
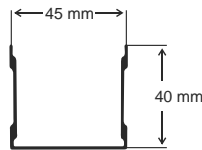
A - 311



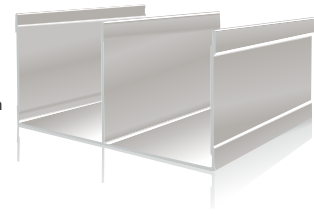
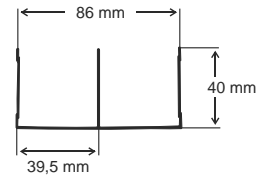
A - 169



A - 302



A - 334

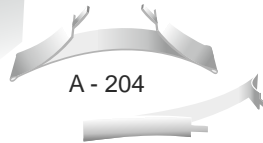


PVC - 206 4 mm
PVC - 207 8 mm



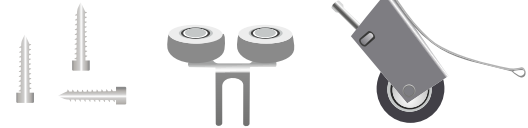
SL - 209

A - 204



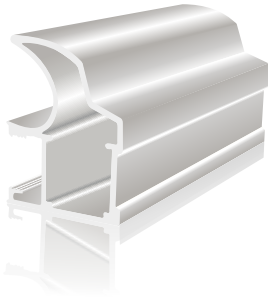
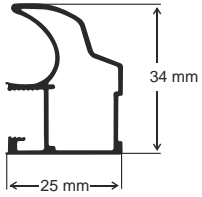
A - 205/30

AS - 148



NEO standard system

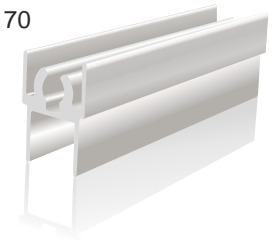
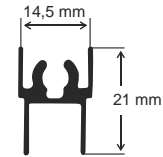
A - 210



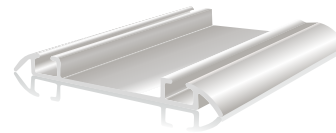
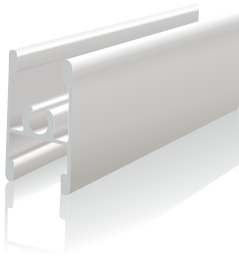
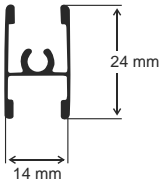
PATENT
001124812-0004



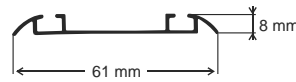
A - 170



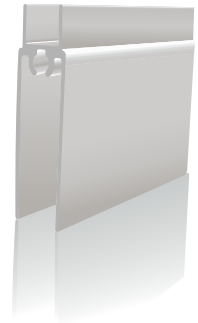
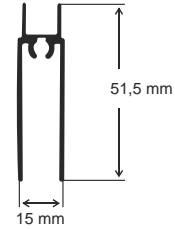
A - 203



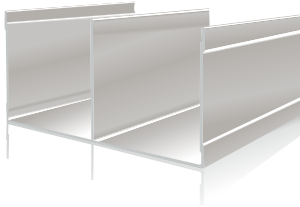
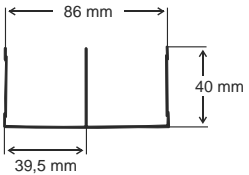
A - 311



A - 169



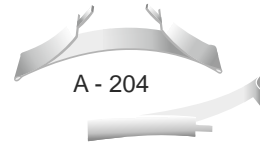
A - 334



PVC - 206 4 mm
PVC - 207 8 mm



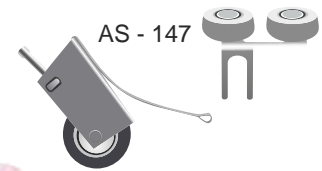
SL - 209



A - 204



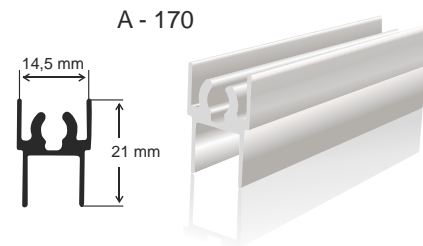
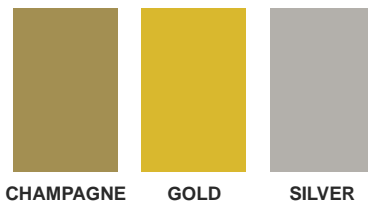
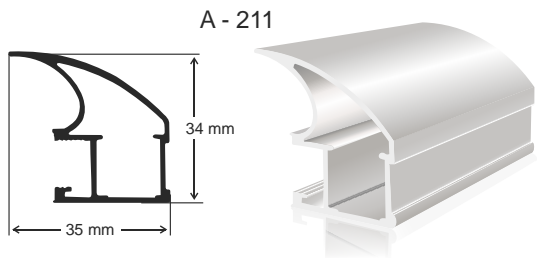
A - 205/30



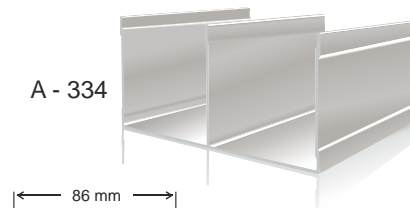
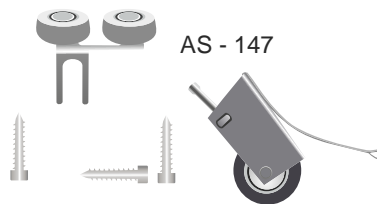
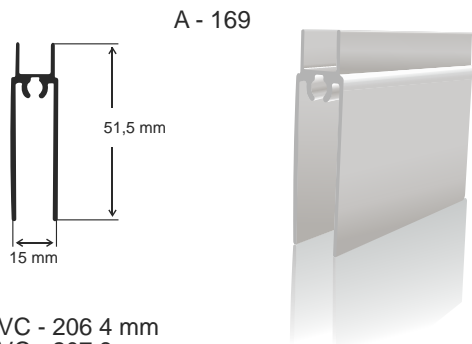
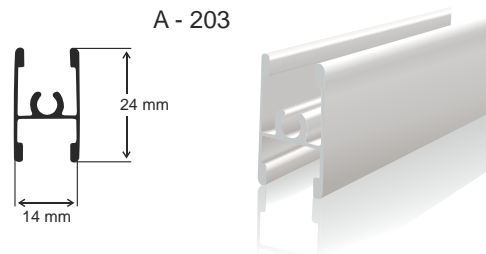
AS - 147



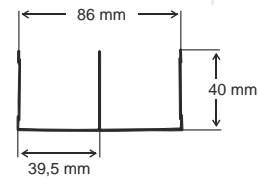
Andorra standard system



PATENT
001124812-0009

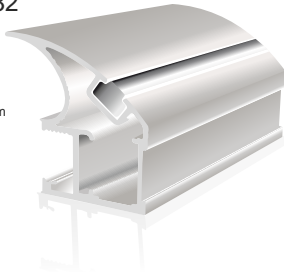
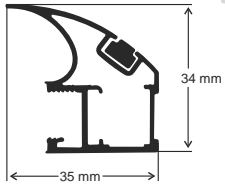


PVC - 206 4 mm
PVC - 207 8 mm

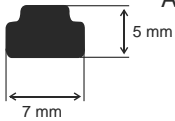


Vertu DeLuxe system

A - 3632



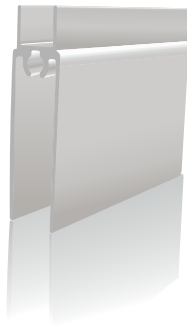
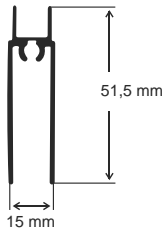
PATENT
001124812-0008



A - Chrom



A - 169



PVC - 206 4 mm
PVC - 207 8 mm



SL - 209

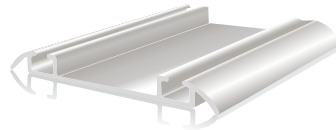
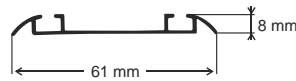


CHAMPAGNE

GOLD

SILVER

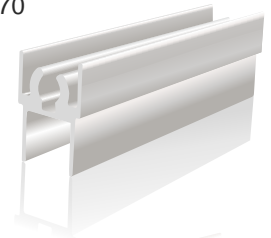
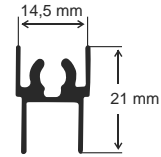
A - 311



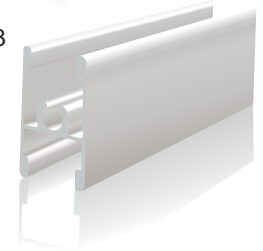
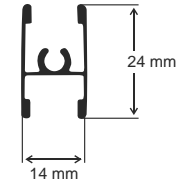
A - 204



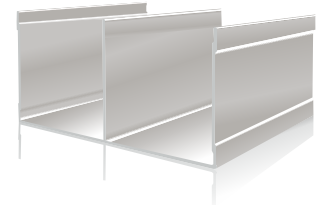
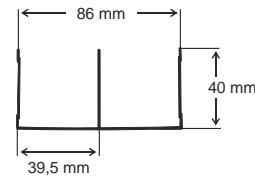
A - 170



A - 203



A - 334

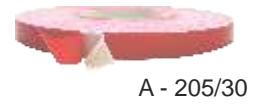
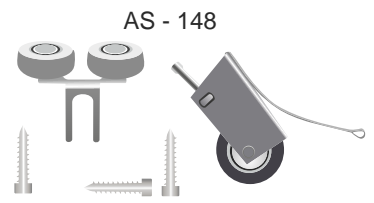
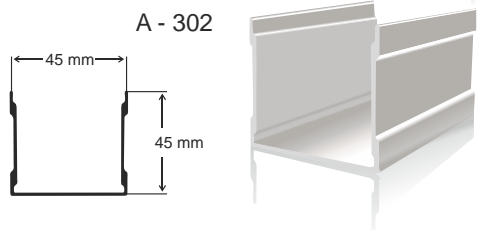
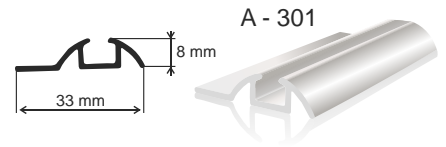
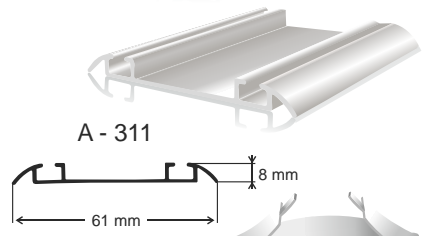
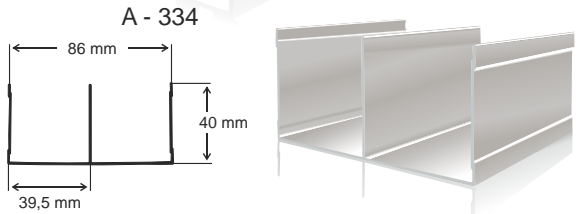
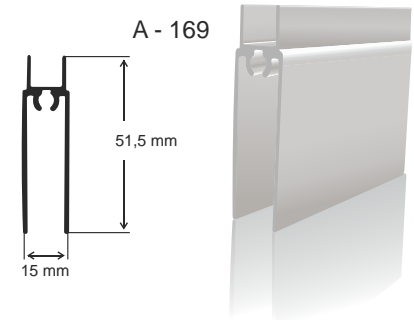
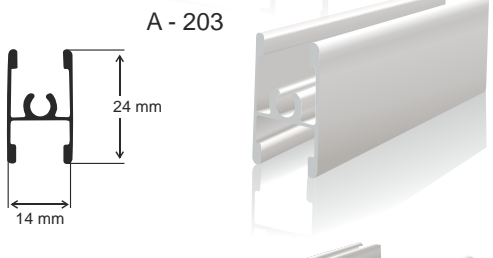
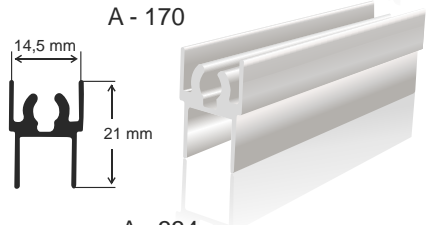
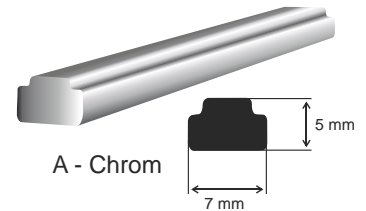
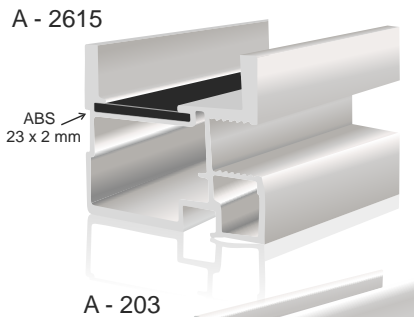
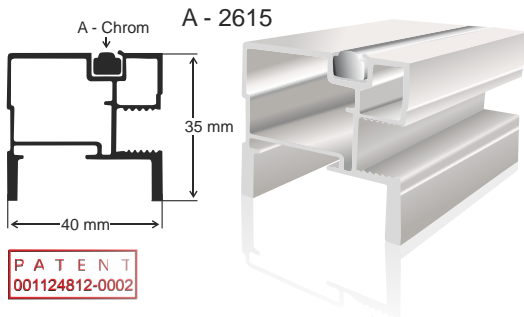


A - 205/30

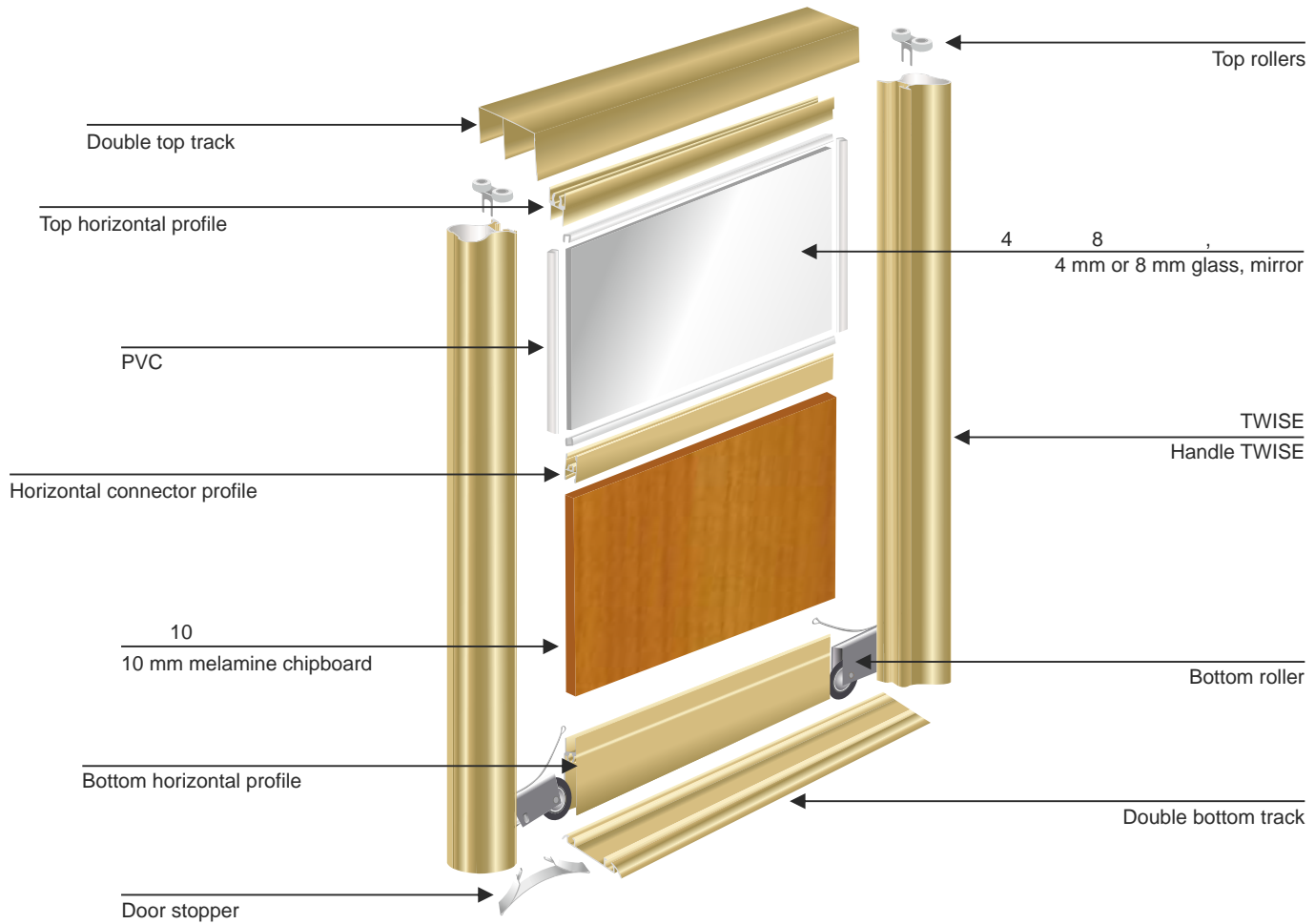


AS - 147





Door assembly instruction



()

CALCULATIONS OF THE DOOR SIZES (mm)

THE DOOR WIDTH. To the width of the doorway add allowance, according to the doors number (listed below) and divide on the total number of doors.

	2 / 2 doors	3 / 3 doors	4 / 4 doors	5 / 5 doors
NEO	23 / 23 mm	50 / 50 mm	77 / 77 mm	104 / 104 mm
TWISE	29 / 29 mm	62 / 62 mm	95 / 95 mm	128 / 128 mm
ANDORRA	32 / 32 mm	68 / 68 mm	104 / 104 mm	140 / 140 mm
KONCEPT	35 / 35 mm	74 / 74 mm	113 / 113 mm	152 / 152 mm
VERTU	32 / 32 mm	68 / 68 mm	104 / 104 mm	140 / 140 mm
EKO	15 / 15 mm	38 / 38 mm	61 / 61 mm	84 / 84 mm
	40		THE DOOR HEIGHT. From the doorway height minus 40mm.	

THE SIZE OF THE FILLING. From the size of door minus:

	10 / For 10 mm filling		4 / For 4 mm filling	
	/ From height	/ From width	/ From height	/ From width
NEO	59 / 59 mm	35 / 35 mm	62 / 62 mm	38 / 38 mm
TWISE	59 / 59 mm	48 / 48 mm	62 / 62 mm	51 / 51 mm
ANDORRA	59 / 59 mm	35 / 35 mm	62 / 62 mm	38 / 38 mm
KONCEPT	59 / 59 mm	60 / 60 mm	62 / 62 mm	63 / 63 mm
VERTU	59 / 59 mm	35 / 35 mm	62 / 62 mm	38 / 38 mm
EKO	2 / 2 mm	4 / 4 mm	5 / 5 mm	7 / 7mm

()

The upper, lower and middle **HORIZONTAL CONNECTING RAILS SIZES.**

	NEO	TWISE	ANDORRA	KONCEPT	VERTU	EKO
From door width minus:	50 / 50 mm	64 / 64 mm	50 / 50 mm	78 / 78 mm	50 / 50 mm	40 / 40 mm

ANDEKO

Phone: +371 67272272

Fax: +371 67567390

www.andeko.lv, info@andeko.lv

Kr. Barona 136, Riga

LV-1012, Latvia